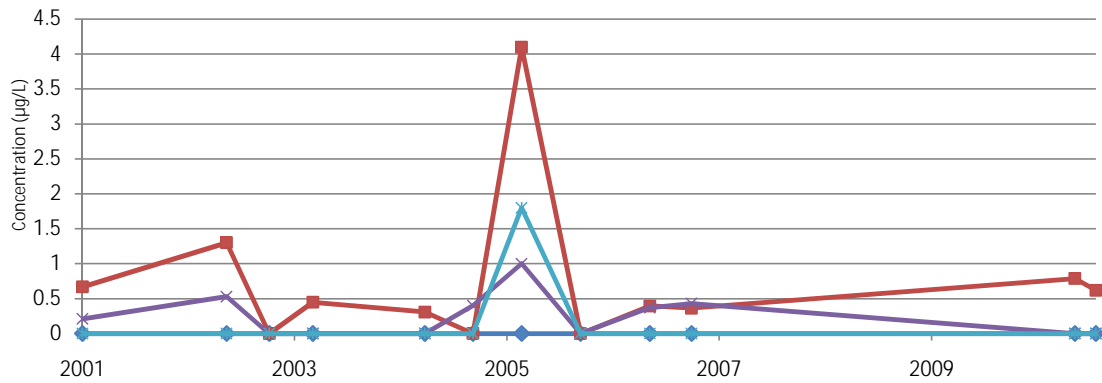


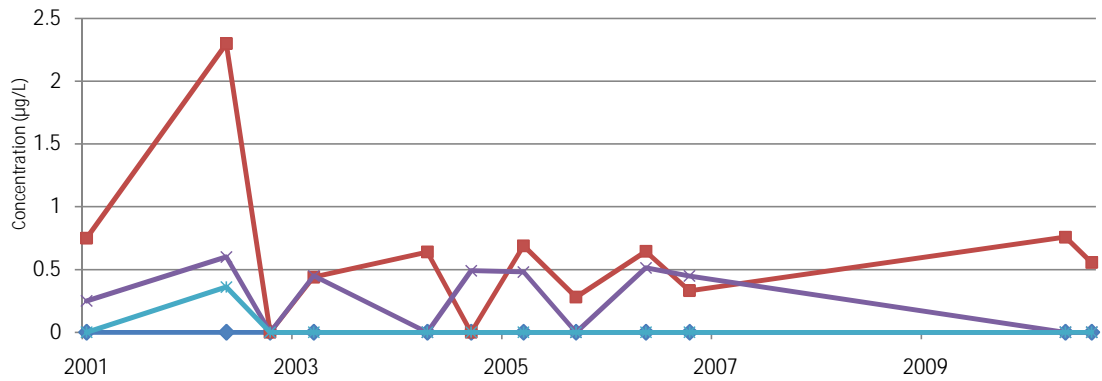
Appendix C-2
Trend Plots of Selected VOC Data
 2010 Annual Monitoring Report
 Site 78 (PICA 013) Groundwater and Surface Water
 Picatinny Arsenal, New Jersey

Surface Water Trend Plot For 78-SW-004



	5/22/2001	9/30/2002	2/24/2003	7/24/2003	8/12/2004	1/25/2005	7/11/2005	1/30/2006	9/25/2006	2/16/2007	9/27/2010	12/8/2010
1,1,1-Trichloroethane	0	0	0	0	0	0	0	0	0	0	0	0
cis-1,2-Dichloroethene	0.67	1.3	0	0.45	0.31	0	4.1	0	0.396	0.365	0.789	0.62
Trichloroethene	0.21	0.53	0	0	0	0.4	1	0	0.371	0.431	0	0
Vinyl chloride	0	0	0	0	0	0	1.8	0	0	0	0	0

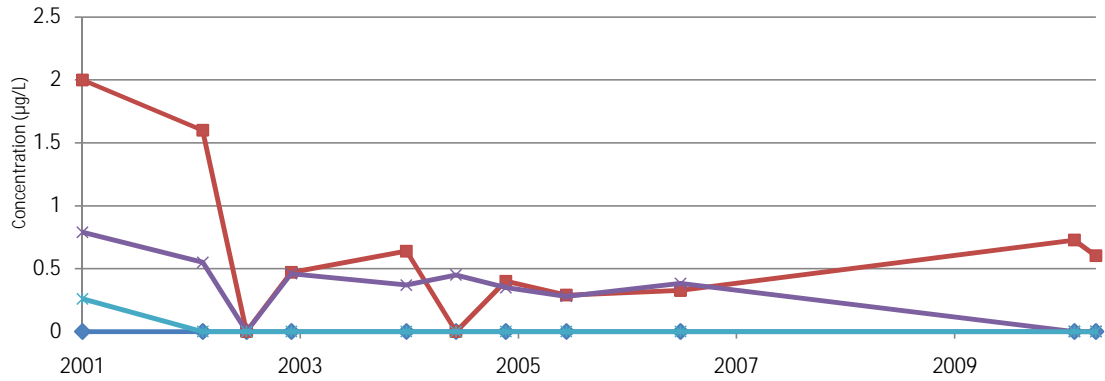
Surface Water Trend Plot For 78-SW-005



	5/22/2001	9/30/2002	2/24/2003	7/24/2003	8/12/2004	1/25/2005	7/11/2005	1/30/2006	9/25/2006	2/16/2007	9/27/2010	12/8/2010
1,1,1-Trichloroethane	0	0	0	0	0	0	0	0	0	0	0	0
cis-1,2-Dichloroethene	0.75	2.3	0	0.44	0.64	0	0.69	0.28	0.645	0.331	0.758	0.556
Trichloroethene	0.25	0.6	0	0.45	0	0.49	0.48	0	0.513	0.448	0	0
Vinyl chloride	0	0.36	0	0	0	0	0	0	0	0	0	0

Appendix C-2
Trend Plots of Selected VOC Data
 2010 Annual Monitoring Report
 Site 78 (PICA 013) Groundwater and Surface Water
 Picatinny Arsenal, New Jersey

Surface Water Trend Plot For 78-SW-006



	8/23/2001	9/30/2002	2/24/2003	7/24/2003	8/12/2004	1/25/2005	7/11/2005	1/30/2006	2/16/2007	9/27/2010	12/8/2010
1,1,1-Trichloroethane	0	0	0	0	0	0	0	0	0	0	0
cis-1,2-Dichloroethene	2	1.6	0	0.47	0.64	0	0.4	0.29	0.327	0.727	0.603
Trichloroethene	0.79	0.55	0	0.46	0.37	0.45	0.35	0.28	0.383	0	0
Vinyl chloride	0.26	0	0	0	0	0	0	0	0	0	0